

# TREX FENCING AND GATES FOR COMMERCIAL APPLICATIONS

Leading Innovation in  
Composite Fencing



# Trex Fencing & Gates for Design and Function

Products selected for fencing will vary depending on the requirements of a project. Trex Fencing offers solutions for multiple applications giving architects and specifiers a product that meets construction requirements for fences or gates from opaque structures to semi-privacy screens. Trex Fencing can be combined with other materials for a unique design flair or to meet a project need.

In fencing, architects often face the challenge of finding a product that meets functional requirements while also providing the benefit of aesthetic appeal. Trex was designed specifically to merge the two elements. As expectations for design continue to evolve, buyers demand more from fencing than just security or privacy.

One of the primary objectives Trex took into consideration when developing the fence design was to move away from the concept of a front side and a back side. With Trex, both the users and neighbors benefit from a fence with an attractive presentation.

Trex fencing adapts to various heights. From 2' tall wall toppers to 12' tall sound barriers, Trex fencing is used in commercial applications to achieve exact elevations. Trex fences are not made from pre-built panels. This provides an advantage when the fence must be adapted to fit a space or be shortened or heightened.

While six feet is the most common height for a fence, commercial projects often require an eight-foot-tall fence for perimeters and an even taller fence for HVAC and other equipment. Where necessary, additional steel post inserts and aluminum bottom rails give the Trex fence additional rigidity and durability over other materials.

*Trex elevates outdoor spaces with low-maintenance, high-performance, eco-friendly products. Trex Fencing offers aesthetically pleasing, value-oriented solutions.*

**Trex** Seclusions<sup>®</sup>  
COMPOSITE FENCING SYSTEM



University Housing – Columbus, OH



Credit Union – Provo, UT



Shopping Center, Washington, DC

## Trex Seclusions® - A Vertical Design that Upgrades the Traditional Fence

Trex achieves its appearance through a system of interlocking pickets. The simulated board-on-board design creates dimension and attractive shadow lines, and it ensures strength while helping the pickets retain their shape as the fence weathers.

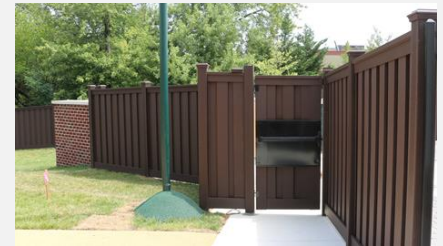
Since its introduction in 2005, the Trex picket system has proven consistently to be a superior design. Flat boards in wood or other composite are affected by distortion and shrinkage.

All other design elements of Seclusions merge form with function as well. The 5x5 universal posts are wider than the typical 4x4 wood post, giving them not only additional strength but a statelier appearance. The top rail provides lateral strength to resist high winds (tested for 130 mph sustained / 147 mph in 3-second bursts for 6' tall, and 100 mph sustained / 116 mph in 3-second bursts for 8' tall) as well as an attractive cap-and-trim look.

The heavy gauge aluminum bottom rail provides the fence with tremendous vertical and lateral rigidity. When sleeved with Trex's bottom rail covers, a consistent look with the composite pickets is achieved and the covers create a picture frame appearance in concert with the posts and top rails. Trex Seclusions does not require many fasteners to begin with and the few that are needed are well hidden.



Travel Stop - Donna, TX



ECD School – Ellicott City, MD



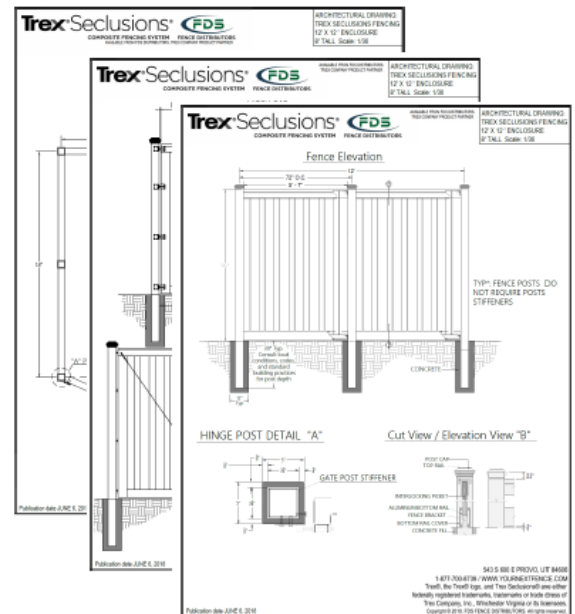
Scale Station – Tulsa, OK

## Enclosures and Dumpster Gates

In addition to using Trex fencing for perimeters, privacy screens, wall toppers, and landscaping design elements, Trex is commonly used for enclosures and dumpster gates in commercial applications. Almost all properties that are staffed by employees are required to have dumpsters and HVAC equipment or similar exterior units. Enclosing these spaces is often necessary from a security standpoint.

Trex contributes as a design element, turning a typically unattractive area into a pleasing feature. Additionally, Trex provides a value engineering alternative to finished masonry. Besides the initial outlay for a masonry wall, Trex is also significantly less expensive to repair than masonry and can be fixed quickly without the need for specialized equipment.

**Corporate Accounts.** Trex Fencing can also provide design consistency for multi-location corporations. For example, companies such as Love's Travel Stops, Panera Bread, O'Reilly Auto Parts, and Walmart use Trex fencing because the established design of the system creates not just uniformity but also an efficient method to package and install the product. Service level agreements (SLAs) can be established with companies and government entities to provide a substantial advantage for configuration control and budgeting.



Visit the product website for drawings and technical information:  
[TrexFencingFDS.com/Resources](http://TrexFencingFDS.com/Resources)

## Matching Needs

The benefits of a Trex fence are substantial. The following table will give architects and specifiers a good overview of those benefits compared to common configurations of other products.

Requirement	TREX	Wood	Vinyl	Other Composites	Masonry
Maximum Post Spacing	8'	4' - 8'	6' - 8'	6' - 8'	N/A
Heights up to 12 ft tall	✓				✓
No painting/staining	✓		✓	✓	✓
Rot-free, insect resistance	✓		✓		✓
Performs well against warping, cracking, splitting, chipping, etc.	✓				✓
Easy to repair	✓		✓		
Long-lasting, natural wood-like matte finish	✓				
Standard design is fully private (no gaps between pickets)	✓		✓		✓
25+ years of company and product longevity	✓				
Same look on both sides	✓		✓		✓
Manufacturer warranty	✓		✓	✓	
LEED point contribution	✓				
Recycled content	95%	0%	0%	<75%	varies
Green manufacturing	✓			some	
High wind load performance	✓				✓
Low-impact installation	✓	✓	✓	✓	

## A LEED-Contributing Product

The Trex composite formula and the company itself have been environmentally responsible since the beginning. Trex is a member of the U.S. Green Building Council (USGBC) and the company's products can contribute up to five LEED points to applicable projects.

Trex composites combine recycled hardwood fibers and polyethylene plastic film. These comprise 95% of its content with adhesives and pigmentation adding the remaining 5%. Raw materials are acquired within regional sourcing criteria defined by the USGBC to minimize environmental impact, and the product provides exceptional performance in innovation.

### MATERIALS & RESOURCES:

Credit 4.1	Recycled Content: 10%	1 point
Credit 4.2	Recycled Content: 20%	1 point
Credit 5.1	Regional Materials: 10%	1 point
Credit 5.2	Regional Materials: 20%	1 point

### INNOVATION IN DESIGN:

Credit 1	LEED Innovation Credit	1 point
----------	------------------------	---------

*Trex products contain 95% recycled-content*  
*Trex products contribute up to five LEED points to any structure*



**No trees**  
have ever been cut down to make Trex products



**400 million lbs.**  
of plastic film and wood are saved from landfills each year



Almost **100%** of factory waste is reclaimed



**No harmful chemicals**  
are used in Trex's eco-friendly manufacturing processes

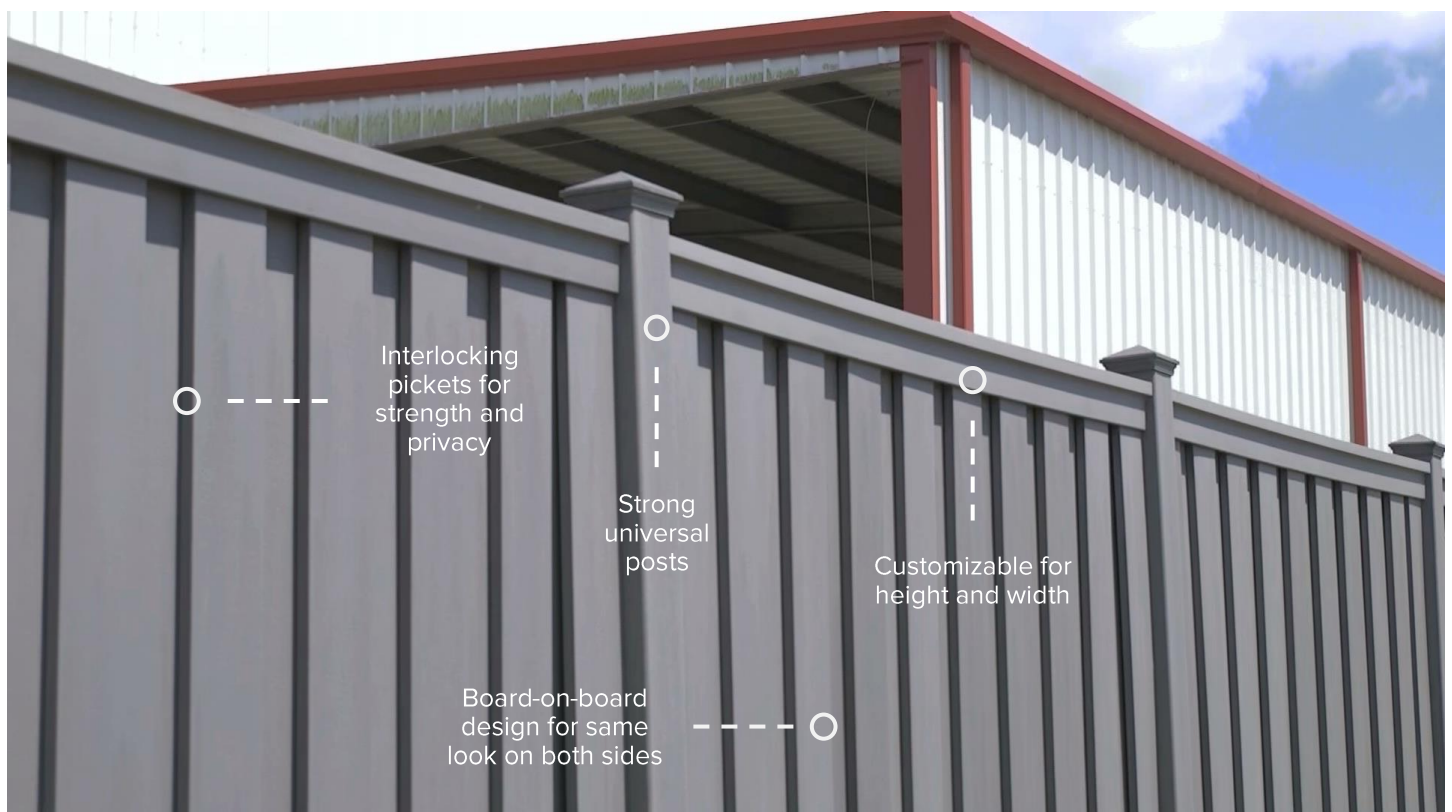
## PRODUCT BENEFITS FOR SUPERIOR PROJECT PLANNING

Trex benefits projects with several elements that will appeal to architects and specifiers. Professionals looking for innovative, low-maintenance alternatives to wood and vinyl fencing as well as brick and finished CMU walls will find that Trex Fencing provides solutions for most project needs. Here are some of the reasons why buyers select Trex Fencing:

- Requires little to no maintenance (occasional cleaning if necessary); does not require painting or staining
- Designed for value engineering; Trex is typically less expensive than finished masonry walls
- Installs with less impact on a project site than masonry; unlike block walls, Trex does not require a large footer
- Weathers well; will not rot, splinter, crack, or suffer insect damage like a wood fence
- Lighter than composite deck boards and designed specifically for vertical fence applications
- Consistent design spec from the manufacturer (no design specification creep)
- Provides a softer, more natural appearance than a wall (this is important when landscaping and design elements are integral to a project)
- Designed with a unique board-on-board appearance (same look on both sides)
- Provides full sight obstruction for privacy and security, and some sound mitigation for reduced noise
- Manufactured in the United States
- Meets green building requirements; 95% recycled composite materials (contributes up to five LEED points)
- Performs longer with more durability than vinyl PVC

## UNIQUE ATTRIBUTES OF A TREX FENCE

- Interlocking pickets create full privacy without gaps
- Fence components make sloping or stepping easy
- Recycled materials help contribute to a greener environment
- High wind load capacity and all-season durability – the perfect fence in every part of the country
- Natural looking colors are sustained throughout its life even as the fence lightens and weathers
- Posts can be used to enhance iron, wood, or vinyl fences (the highly durable posts won't warp or rot)





PK-8 School – Lafayette, LA



Engineering What's Next  
in Outdoor Living™

**Merchants Metals**  
[MMI@TrexFencing.com](mailto:MMI@TrexFencing.com)  
[www.TrexFencingFDS.com](http://www.TrexFencingFDS.com)

Trex®, the Trex® logo, and Trex Seclusions® are either federally registered trademarks, trademarks or trade dress of Trex Company, Inc., Winchester Virginia or its licensees. HORIZONS® Horizontal Fence System (US Patent No. 97/918,15) and Shenandoah Rail Fence (patent pending) are trademarks of Fencing Supply Group. Copyright © 2023 Fencing Supply Group. All rights reserved.